



Shree Swanra Integrated Community Development Center (SSICDC), Gorkha

Annual Report 2016/17

SSICDC would appreciate receiving a copy of any material that uses this publication as a source.

No use of this publication may be for any commercial purpose whatsoever without prior permission in writing from SSICDC.

Editorial Team: Bikash Dhungana
Puranjan Sapkota
Narayan Dhakal

Special Thanks: Dronacharya Timilsina
Sashi Kiran Sapkota
Rishi Shrestha
Pramila Adhikari
Sanjita Shrestha

Design and Layout Creation:

Layout: wps, wpsnepal@gmail.com, 5550289

Front Cover: SSICDC team at group picnic, ***Demo house constructed at Aruarbang***

Back Cover: Floating hills as seen from Gorkha, Bazar (Photo: Puranjan Sapkota)

Contents:	Page
Abbreviations	iii
Message from the Board and Executive Director	v
Board Members	vi
Organization Structure	vii
Background and Introduction	1
Program Coverage	5
Budget	6
Thematic Progress and Achievements	6
Child Protection	6
Shelter	7
Wash	10
Food Security and Livelihood	11
Health and Nutrition	15
Education	18
Social Protection	19
DRR	21
Partnership with Government	22
Human Resource	23
Audit Reports	24
Assets	26
SSICDC at Glance	27
Our Partners and resource	28

Abbreviations:

ANC	Antenatal Checkup
BCC	Behavior Change Communication
CP	Child Protection
CSEB	Compressed Stabilized Earth Block
CSEB	Compressed Stabilized Earthen Blocks
CSIDB	Cottage and Small Scale Industries Development Board
CAFOD	Catholic International Development Charity
DADO	District Agriculture Development Office
DDRC	District Disaster Risk Reduction Committee
DHO	District Health Office
DLPIU	District Level Program Implementation Unit
DLSO	District Livestock Service Office
DPHO	District Public Health Office
DRR	Disaster Risk Reduction
DUDBC	Department of Urban Development and Building Construction
ECD	Early Child Development
EGR	Early Grade Reading
ELCA	Evangelical Lutheran Church in America
ELM	Early Learning Math Skill
FCHV	Family Child Health Volunteer
HFOMC	Health Facility Operation and Management Committee
HH	Household
IYPF	Infant and Youth Child Feeding
ICS	International Citizen Service
LDRMP-	Local Development Risk Management Committee
MAM	Postnatal Acute Malnutrition
MOUD	Ministry of Urban Development
MUAC	Mid-Upper Arm Circumference
NERP	Nepal Earthquake Response Program
PNC	Postnatal Checkup
PTA-	Parent Teacher Association

QLE	Quality Learning Environment
RUSF	Ready to Use Supplementary Feeding
RUTF	Ready to Use Therapeutic Feeding
RVT	Reservoir Tank
SAM	Sevier Acute Malnutrition
SCI	Save the Children
SMC-	School Management Committee
SSICDC	Shree Swanra Integrated Community Development Center
VCPC	Village Child Protection Committee
VDC	Village Development Committee
VSLA	Village Saving and Loan Association
SSICDC:	Shree Swanra Integrated Community Development
DFID:	Department of International Development
CRS:	Catholic Relief Services
VDC:	Village Development Committee
DDRC:	District Disaster Relief Committee
HHs :	House Holds
MBBL:	Manaslu Bikas Bank Limited
GOs:	Government Organizations
WCF:	Ward Citizen Forum
NPR:	Nepalese Rupees
CD:	Cash Distribution
ED:	Executive Director
AFO:	Account and Finance Officer
SM:	Social Mobilizer
DRO:	Documentation and Reporting Officer
JD:	Job Description
ToR :	Terms of Reference
CAPA:	Community Adaptation Plan for Action
CARE:	Cooperative for Assistance and Relief Everywhere

Message from the Board and Executive Director

It is our pleasure to introduce Shree Swanra Integrated Community development Centre (SSICDC), Gorkha Annual Report 2016/2017. SSICDC, Gorkha has completed its 30th years journey and will continue for many more years providing services to marginalized, vulnerable and socially back warded community mostly women and Children. We are fully aware of our citizen responsibility and committed to provide services to the marginalized communities in a suitable way in the future as well. We would like to express gratitude towards all our funders including Government of Nepal, its ministries, and departments, who accept us as true program implementation organization and delivered continued support for us. We would like to thank the community people who saw optimism towards our programs and supported for better outcome. We are pleased to be a leading humanitarian body of Gorkha district supporting the most affected communities to build back after the devastating 2015 earthquake. Our programs, we believe, are supporting the country to be well into the recovery and reconstruction phase. Despite the continuous efforts, a great deal still remains to be done in the sector of Health, Nutrition, Hygiene and Sanitation, Shelter reconstruction, Education, Livelihood and associate components as Gorkha district was hit most severely back in April, 2015. We are always ready to join our hands with every stakeholder aiming to continue the contribution towards the national campaign of reconstruction and recovery.

We have acceptance in an effective human capital and mobilization according to the need of program. SSICDC would not be in the landmark where we are without the remarkable and dedicated support of staffs working as various designations from office to community level. Our staffs are highly acknowledged and expectation remains for continuation of appreciative support from them in future days.



Krishna Kumari Gurung
Chairperson



Sita Ram Shrestha
Executive Director

Board Members:



*Krishna Kumari Gurung
Chairperson*



*Devi Maya Thapa
Treasurer*



*Shankar Nepali
Vice-Chair*



*Purna Maya Wanta
Secretary*



*Yam Narayan Shrestha
Member*



*Gyan Maya Gurung
Member*



*Hariman Gurung
Member*

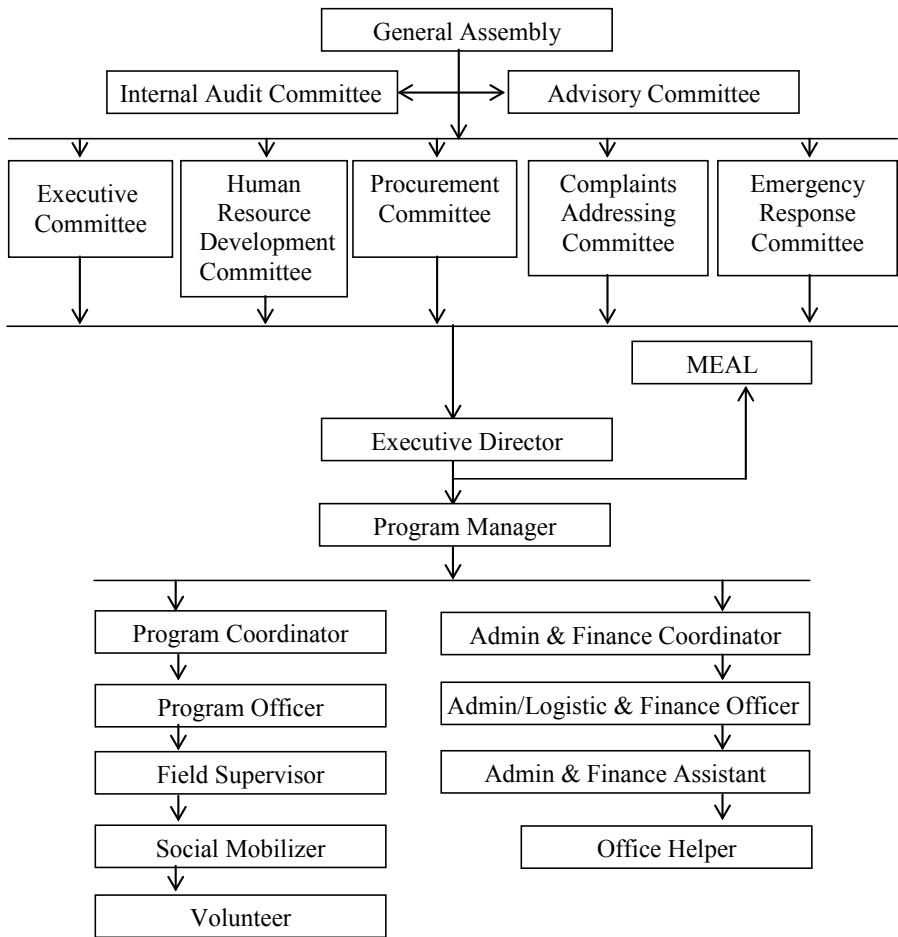


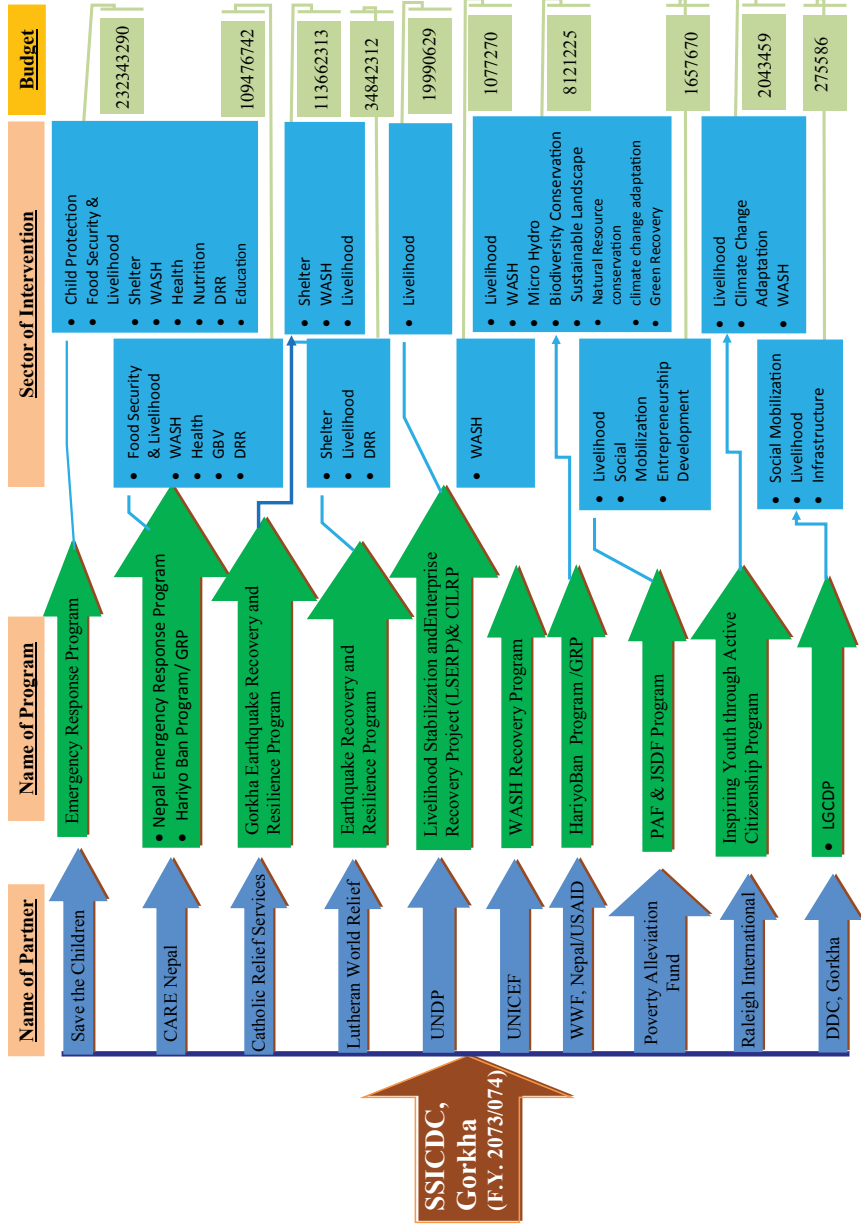
*Tulashi Babu Shrestha
Member*



*Hem Bd. Gurung
Member*

Organization Structure





Background and Introduction

Shree Swanra Integrated Community Development Centre (SSICDC) is a non-political, non-governmental and non-profit making community based organization established on 2044 B.S with a vision of the future society where people's rights are fully respected with opportunities to lead a productive, happy and dignified human life.

The overall programs coverage of the organization are community health and sanitation education, maternal and child health mobile clinic in coordination with DPHO(District Public Health Office), Sub-Health post, Health Post, conflict transformation and peace building, drinking water supply and sanitation, adult and child education, women empowerment, micro finance, farmers managed irrigation, income generation through agriculture and forest resource management, community managed infrastructures like wooden bridge building, child development, reproductive health, child and women rights, gender issues and social inclusion.

With the goal of meaningful contribution to improve the quality of life of rural backward communities of Nepal, SSICDC works to encourage people's participation in development process through capacity building of the communities. It supports local initiative to create a better future of the rural backward communities. This will be attempted through strengthening the

civil society, especially the users groups complementing the local government efforts.

25th April, 2015- Saturday proved to be historic and is marked as the day when Nepal was hit by a massive earthquake of magnitude 7.8 on the Richter scale, the epicenter being at Gorkha- around 80 km north west of the capital city, Kathmandu. Another earthquake measuring 7.3 magnitude followed on 12th May 2015, a combined effect of both caused severe damage to 14 districts out of 75 including Gorkha, Sindhupalchowk, Nuwakot, Dolakha and Rasuwa districts. According to latest authoritative data, 8,702 dead, 22,493 injured, 202,157 buildings fully and 214,202 buildings partially damaged.

In Gorkha district, total of 443 died and 952 were injured, out of 66,506 households, 59,527 are fully damaged and 13,428 are partially damaged. The northern VDCs of Gorkha district are extremely remote, hard to reach and at high risk of cold/winter.

Thousands of villages have been devastated, with up to 95% of personal and office buildings, clinics and schools in some districts brought to ground. As of an official estimate, more than two million dollars property has spoiled by this Nepal earthquake BS 2072. In the 14 worst affected districts, 600,000 homes were destroyed and another 280,000 badly damaged. After the devastating earthquake of 25

April 2015, SSICDC from the phase of emergency response is working in all VDCs of Gorkha district with the Mutual coordination with Save the Children, CRS, Care, LWR, UNDP, and DDC Project. SSICDC lunched the earthquake response program in the collaboration with save the children International in different VDCs of Gorkha, where distribution of NFIs, Shelter kits, ECHO cash support and masons training were accomplished successfully under the close coordination with DDRC, DUDBC and DDC Gorkha. All the activities carried out under SSICDC were targeted to benefit the marginalized group specially children and pregnant and lactating mothers since they are more vulnerable to impacts of Earthquake under 6 major themes: Child Protection, Education, Food Security and Livelihood, Shelter, Health and Nutrition, WASH and Social Protection.

Our Objectives:

- Conduct Child Rights and Development Programs.
- Conduct women empowerment programs.
- Sustainable agriculture development.
- Lunch programs in human rights and social inclusion.
- Deliver sustainable health and hygiene benefits to the rural people through the provision of safe Drinking water interlinked with low cost sanitation and health education.

- Improve rural Infrastructure facilities like foot trails, trail bridges, micro irrigation, micro hydropower, community buildings and rural roads etc.
- Promote saving and credit & Co-operative.
- Develop and promote appropriate technologies in rural area.
- Develop, disseminate and promote renewable energy technologies in rural area.
- Conserve environment and natural resources & encourage its sustainable use.
- Institutional strengthening.
- Create the employment opportunities through various income generating and vocational training.
- Organize the awareness program and other different social, economic and educational programs for the enhancement of marginalized group.
- Conduct the programs for the improvement of livelihood focused on tourism, livestock and Medicinal herbs.

Our Vision:

SSICDC's vision of the future is a society where people's rights are fully respected with opportunities to lead a productive, happy and dignified human life irrespective of their religion, sex & caste and material condition.

Our Mission:

SSICDC works to encourage people's participation in development process through capacity building of the communities. It supports local initiative to create a better future of the rural backward communities. This will be attempted through strengthening the civil society, especially the users groups complementing the local government efforts.

Our Goal:

The overall goal of SSICDC is to contribute meaningfully to improve the quality of life of rural backward communities of Nepal.

Executive Summary

SSICDC had close to 200000 people who became its development partners at individual level benefitting community in health nutrition, education, protection, livelihood and disaster management and response. The deadly earthquake of April 2015 affected the overall aspect of Gorkha and of Nepal as a whole. Being the epicenter of the deadly earthquake, Gorkha was among one of the most affected district of Nepal. With the help of national and international development partners SSICDC initiated the holistic approach of enhancing the life of people including their wellbeing in shelter, livelihood, wash, protection, education and strengthening protection mechanism.

In 2016 and 2017 we made our deliberate move towards focusing on the recovery and rehabilitation of the

earthquake victims in consolidation with our national and international partners and donors. We made a strong hand agreement with our three major donors save the children, Care Nepal and Catholic Relief Services (CRS) for the rescue and recovery of the earthquake victims along with other donors like UNDP, DDC, LWR, Raleigh, UNICEF, etc. Rescue and recovery operation was conducted with rapid initiation to recover the suffering of the earthquake victims. Child protection policy, gender policy and financial guideline were followed to the fullest for the accountability and transparency.

In the context of emergency SSICDC have Achieved significant progress towards normalizing the life of people affected by the earthquake. 1305 earthquake resilient shelter were constructed in line with government guidance. Similarly 959 skilled mason and 446 unskilled masons were produced to complement the reconstruction process. Likewise 43 drinking water system, 843 latrines, 3 pre-fabricated health post were constructed to enhance access to health and sanitation. Similarly capacity building of the protection mechanism was done to strengthen community based protection mechanism to tackle the issue of abuse neglect and gender based violence. Endowment fund was also established in 8VDC to ensure the protection children in the community.

Likewise livelihood remains the vital aspect to recover from the emergency.

Various livelihood schemes were generated to enhance the economic condition of the people. 29 irrigational canals were rehabilitated benefitting 4080 labors through cash for work. Various small scale entrepreneurs were established. 2 Foot trails were accomplished benefitting the community for the easy access to market enhancing their livelihood.

Similarly 3157 people were trained on SRMH to tackle issue of increasing mothers', newborns', children's and adolescent's access to health care services. Supported to Severe Acute Malnutrition Management in 11 Outpatient Therapeutic Care (OTC) Centers.

Mo.No.: 9856040172 **Amrit Bogati**

INFO-TECH College Of Hardware Engineering

Haramatari, Gorkha, Phone: 064-421440

Remember us for:

1. Computer Training
2. Networking
3. Video Editing and Mixing
4. Annual Maintenance Contract
5. Computerized Accounting Training
6. Computer Set and All Parts Suppliers
7. Net Phone & Communication

E-mail: icgorkha2@gmail.com

BET BALAJU

ELECTRICS & TRADERS

Authorized Distributor

मव वर्ष २०७३ सालको हार्दिक शुभकामना ।

ट्रेडोरेटिभ लाईट, स्मार्ट कन्ट्रोलर, फिटिङ्स तथा सम्पूर्ण विजुलीका सामानहरूको लागि हामीलाई सम्पर्कनुहोस् ।

Balaju Chowk, Kathmandu, Nepal
Tel. 01 4366378, 9851007265

प्रो. सविन खत्री

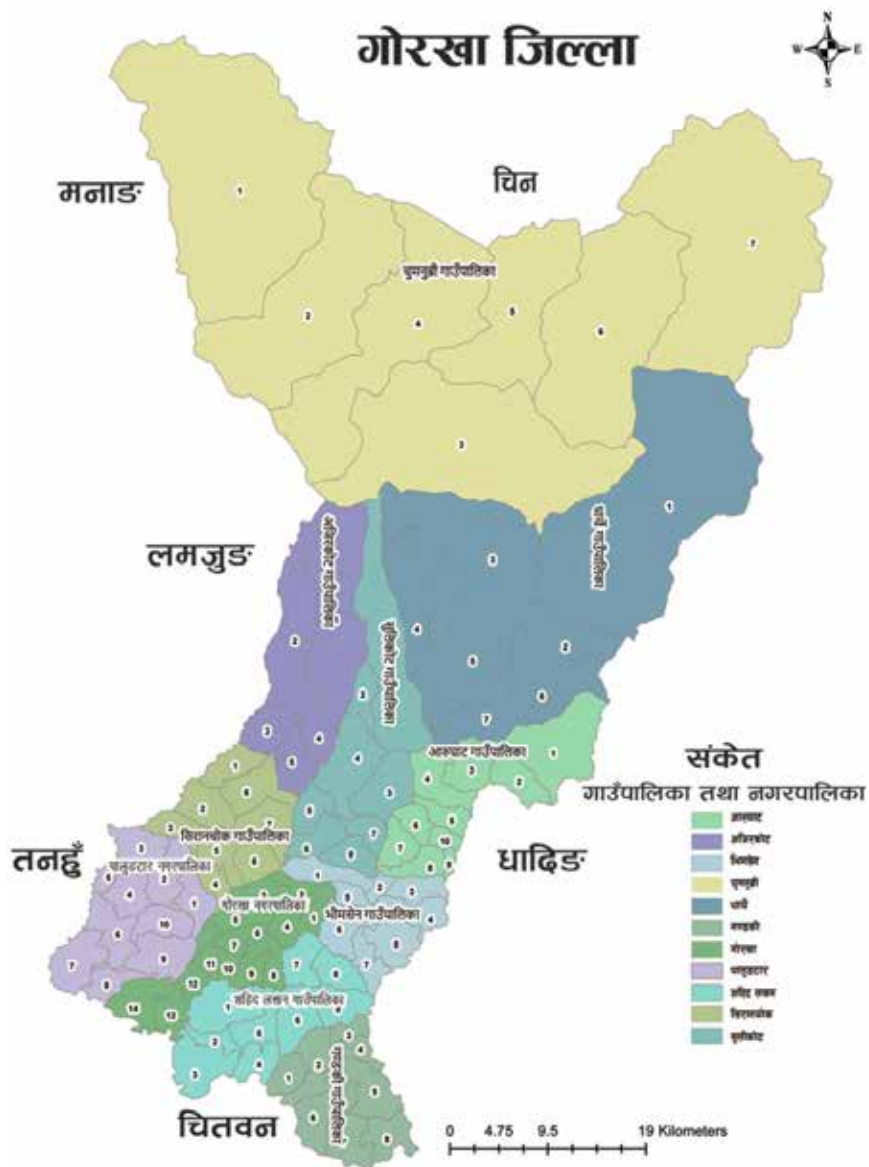
क्याबिनेट आर्ट्स एण्ड फ्लेक्स प्रिन्ट

हरमटारी, गोरखा

साइनबोर्ड, ब्यानर, नाइलन / सेल्फाईका छाप, फ्लेक्स प्रिन्ट, स्लाइट बोर्ड, फिटकर, कर्टिङ, बाल पेन्टिङ नेपालको राष्ट्रिय भण्डार, आकर्षक नमूनापत्र, शिखारलेख, रविन प्रमाण, प्रशंसा पत्र, माथ्याङ्क, निम्न फोटो फ्रेम, सम्बन्धी सम्पूर्ण काम गरिन्छ ।

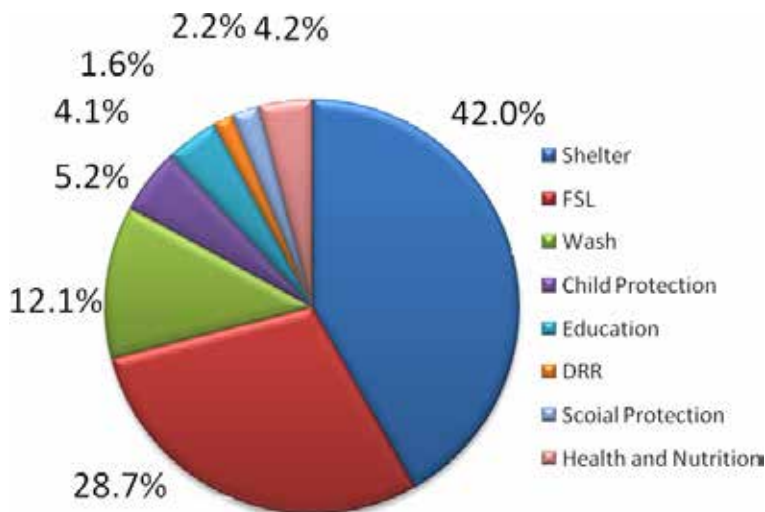
Email: khatrisabin158@gmail.com

Program Coverage:



Source: District Profile of Gorkha, CBS, Gorkha

SSICDC is working on all the local bodies of Gorkha District including 2 municipalities and 9 rural municipalities



Activity Budget Expenditure

Total

Rs 51,40,26,397.44 including operation cost



Thematic Progress and Interventions

Child protection

Child protection is a priority of SSICDC. Focusing on community based child protection, SSICDC and Save the children increasing efforts are channeled into establishing and sustaining a variety of local protective mechanisms expected to ensure protection of all children and to contribute towards strengthening national child protection systems and protecting the children in emergency. Due to the earthquake



major focuses on recovery of Children from trauma and enhancing their access to various services during emergency major outcomes of the interventions were

- ☞ Child Resilience Program (CRP) increased self-esteem of children, identified 5 sexual abuse cases.
- ☞ 9 Community Safe Spaces established and provided psychosocial support
- ☞ 1,846 vulnerable children participated in CRP workshop



Children participating in CRP in CSS

- ☞ District level Child Club Network formed, involvement of children in child protection activity increased
- ☞ 90 school teachers have been trained on positive discipline, referral mechanism and harmful effects of corporal punishment increased in use of participatory tool in classroom
- ☞ 800 highly vulnerable children received unconditional cash support @ Rs. 5,000.00
- ☞ 427 highly vulnerable children received winterization support
- ☞ 1144 children and their HHs have been referred to different agencies

- ☞ Support provided to 31 children in case of emergency (Rape case, Landslide victims, health problems, fire)
- ☞ Rescued one lost child from Lodi khola in coordination with DCWB, Women Cell and referred to Women Rehabilitation Center
- ☞ Capacitated 104 Village Child Protection Committee (VCPC) members, developed their annual plan & service map of community. Case management – 656 cases closed, 231 cases were handed over to VCPCs.



Grassroots Comic Designed by Children

Shelter:

Shree Swanra Integrated Community Development Centre has given a vital importance to reconstruction of safer shelter in partnership with its international donors in line with the government guideline and policy after the devastating earthquake and was able to transfer 2nd tranche cash support to earthquake affected community. We are working in capacity building through orientation, trainings and mass



awareness activities on earthquake resistant safe shelter construction and financial and technical support to 1305 house hold for the construction of permanent shelter in support of save the children, Catholic Relief Services,



Care Nepal and LWR. The main aim is to support beneficiaries in recovery and reconstruction of their shelter according to Government of Nepal reconstruction policies. Similarly all targeted beneficiaries enhanced their skills and knowledge in building back safer constructions through "on the job" training and mass awareness.

In the year, 959 skill masons were trained on safer shelter through the extensive 10 and 7 days training. The local human resources were trained on safer shelter to reduce the scarcity of the human resources as reconstruction work was



Damaged House of Ballav Damai Of Masel

rapid after the earthquake. Similarly 446 unskilled masons were produced to complement the reconstruction work in the community. As the safer shelters were the vital need of the community after the devastating earthquake 46 demo houses were constructed. Demo House was constructed with



participation of participants of training which will be the basis for general people through which they can evaluate whether masons are working as per

requirement while building their houses. Similarly ward and VDC level safer shelter construction group was formed and mobilized to ensure the construction of real safe shelter.



Newly Constructed House of Damai by SSICDC

“Before, I used to work for a whole day and hardly earned Rs. 200-300 per day but now, I earn Rs. 1000 at the rate of Rs. 125 per day which is much more and the work is also a lot less tedious. “If we have skill then it is easier to earn a living and being able to practice the knowledge gained from the training is very worthwhile and fruitful.”

Similarly 1305 household were provided support to construct safer shelter in line with guideline of Nepal government. 755 houses were provided door to door assistance to assist the HH for the construction of EQ Resistance Building and Estimation of RCC and SMM houses in support of Catholic Relief Services. Similarly 450 households were provided cash assistance of Rs. 350000 (Three lakh fifty thousand only) in support of save the children. Similarly LWR supported 100 house hold in Jaubari and Muchowk VDC for the construction of

house hold of the people affected by the devastating earthquake.



Ballav Damai of Masel

Ballav Damai of Masel says –“I am able to construct my house only because of SSICDC and its technician who have guided me and provided financial support throughout the construction my house. As my house was totally damaged by Earthquake, I am really thankful to save the children and SSICDC without which I would not be able to construct my house”.

WASH:

WASH is one of the major themes of SSICDC. WASH is the collective term for water Sanitation and hygiene. Due to their interdependent nature these three core issues are grouped together to represent a growing sector. While each a separate field of work, each is dependent on the presence of the other. 2015 April 25th gigantic earthquake,



most of houses and the school were fully damaged. Along with the houses and school its latrine, drinking water supply were also damaged. The damage of water supply affected the access of people to clean drinking water and sanitation.

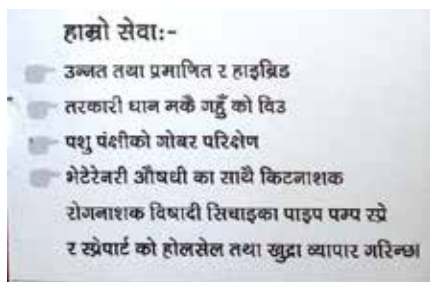


In response to the vital condition of wash facilities in the community, SSICDC in Coordination with its partner have initiated various interventions to enhance access to clean drinking water in community school and health posts. Similarly SSICDC works to ensure access and use of basic toilets and ways to separate human waste from contact with people.

44 drinking water supply schemes have been completed (18 DWS save the children, 22 Care, 3 UNDP) to enhance access of common people to clean drinking water.

843 household were provided support for the construction of latrine for the proper sanitation and discourage the open defecation. Out of which 20 community latrine were established in IDP camp of Laprak and Gupshipakha. 40 community latrines were also supported for its improvement.

16 show of street drama were conducted to raise awareness among the community people in the issue related to Wash. They were also acquainted with the hand washing techniques.



Similarly wash awareness were also generated through establishing public bathing center, Dissemination of IEC materials and airing of wash message in the community Chapukhola Bilaune



Material Tarnsported to Construct Chhekampar Chhula and Phurbe DWS

pani Drinking water Scheme is located in the remote VDCs Namely Saurpani 1, Gorkha. It is situated in 84°43.165' longitude, 28° 07.287' latitude and 277 altitudes. The devastating earthquake of April 2015 create leak in the tank which disturbed the source of water due to which the flow of water from the source to the Tank was disturbed .It created the shortage of drinking of water in the village. They have to walk about an hour from Bhangjyang tole to Nepali tole to fetch water .CILRP supports



Damaged Source of Chapukhola Bilaune Pani DWS



Rehaibilated source of Chapukhola Bilaunepani DWS

to create intake, reservoir tank and five public stand posts to reconstruct the Chapukhola Bilaune Pani Drinking water Scheme. The Scheme benefits 40 households in the region.



Food Security and Livelihood

In Emergency Food Security and Livelihoods theme helps families meet their basic needs and protect their



livelihoods during, and after a crisis. This approach help families create an economically stable and food secure home.

In an emergency, food security and livelihood programs are critical in saving people's lives and livelihoods. Immediately following a crisis, SSICDC provides vulnerable families resources to meet their immediate needs, including food, fuel, staple items, and items needed to restart livelihoods.. Livelihood of majority of the rural community in Gorkha relies on agriculture. Due

to severe damage to the CIs due to earthquake the livelihoods of the community were under serious threat. The CIs are relatively simple but its function benefits and services are often central to the survival and economic sustainability of the community .It is therefore outmost important to reconstruct the damaged CIs to maintain and foster the livelihood and enhance socio-economic recovery of the affected communities in the district.

Direct Distribution

For meeting the immediate needs of farmers, rice seeds and seeds storage bins were distributed. Unconditional cash support for farmers and earthquake affected shopkeepers/traders done. 1625 vulnerable families received seed storage metal bins in Swanra, Pandrung and Barpak .In the same way 579 vulnerable families received @ Rs. 25,000.00 cash support for livelihood improvement. Similarly SSICDC in support of Care Nepal provided Paddy seed to 2261 HHS, Cardamom sapling (berna) to 167 households, Tunnel to 768 households. Likewise Super Grain

HOTEL GORKHA BISAUNI PVT. LTD.



Gorkha Municipality-6, Gorkha, Nepal, Tel : 977-64-420107-420419, 420674, E-mail: gh_bisauni@hotmail.com
www.hotelgorkhabisauni.com/ www.facebook.com/bisauni064

Facilities:

- Deluxe Rooms with Attached Bath (AC & Non-AC)
- Restaurant Serving Varieties of Italian, Indian, Chinese, Nepali & Continental dishes with beautiful garden, Sun-set view camp-fire & BBQ.
- Modern Bar Serving Varieties of imported & domestic spirits, wines, beers & other beverages.
- Two Multi-purpose conference hall with seating capacity of 50 to 150 people.
- **WIFI**
- Big Parking Space with Security.
- Hotel Reservation, Tour Guides & Vehicle Rental available on request.
- Trekking Information.
- Emergency Medical Assistance.
- Bed & Breakfast Package also available.

Bag was provided to 9800 HHS and Veg Seed was provided to 10921 HHS in order to meet the immediate need of the family. In addition to this Irrigation Material was provided to 753 HHs. Wheat Seed and vegetable carate was provided to 930 HHs and 60 HHs respectively .Weighing Machine I for 50 HHs was also provided as a direct distribution. Similarly in support of CRS, SSICDC provided maize seed to 5870 HHs of all 6 VDCs likewise 4262 HHs of all 6 VDCs were supported paddy seeds 5kg per HHs. Cardamom Seedling were also provided to 60 farmers of Aruarbang and 20 farmers from Tandrang in support of CRS.

Similarly collaboration of Poverty Alleviation Fund (PAF) and SSICDC also formed Community Organization (CO) and helped for uplifting livelihood status of Earthquake affected community. Income generation, revolving fund mobilization, irrigation canal scheme, reserve tanks, grain grinding mills, capacity building trainings etc. are the



BlackSmith Machinery Support

major activities under PAF. Erstwhile Aruarbang, Thumi, Manbu and Kashigaun VDC's were benefited by PAF where SSICDC worked on the sector of livelihood via other several donors as well. PAF mainly focused on following activities.

- How to utilize loan (RF amount) in profitable business/ occupation.
- How to mitigate risk/ choose risk free business/occupation.
- Differentiate between subsistence and commercial farming.
- Developing a special product as pocket area like "Local Potato", organic fruits, vegetable, tea, and coffee.
- Off season farming/tunnel/ organic production, etc.

Temporary Employment (Cash For work)



SSICDC works with community to generate temporary employment opportunities through cash-for-work or food-for-work projects that result in strengthening community assets. Temporary employment projects have multiple benefits, first by providing financial resources



Machinery Support to Agro processing Mill of takukot

necessary for vulnerable families to meet their basic needs, and secondly, by establishing public works projects that benefit the community. Through cash for work Modality 16 small-scale community schemes, such as, foot trail improvement, drinking water & irrigation construction & maintenance, community building construction, etc. were successfully accomplished by which 579 vulnerable families receive @ Rs11235.00 each. 9 irrigation canals were rehabilitated in support of UNDP and 29 Irrigation canals were rehabilitated benefitting of 2098 workers in support of Care Nepal. In total 4090 community were benefited financially for their work through cash for work. 155 demo goat shelters were also constructed through cash for work modality which plays as the basis for community as the standard for the construction of goat shed.

Livelihoods Assistance & Asset Replacement

SSICDC is support of UNDP provided machinery support to two micro hydropower namely lily khola Micro Hydro Power and Adherikhola Micro Hydro Power of Kharibot VDCs. The machinery was replaced as they were damaged by the earthquake. Similarly machinery supports were also provided to three agro processing mill of Takukot. Similarly Off-Farm Support Sisnu



Handicraft Training to community people

Powder drier and grinding Machine was also provided to the community people to sustain their livelihood. Blacksmith Support was also provided to 42 HHs in support of Care Nepal. Solar panel was provided to 12 people of Gorkha Municipality to support their enterprise. Similarly agro process machinery supports were also provided 5 people of Gorkha Municipality in support of LSER/UNDP. Deep freeze was provided to four people to run their own fresh house in Harmi and Jaubari VDC.

Small Business & Grants Training



DADO, Gorkha Orienting Farmers on Apiculture

706 beneficiaries received Skill development trainings on domestic cattle rearing, poultry, bamboo stool production, bee keeping, poly house, kitchen gardening in support of save the children. 14 group enterprises (165 Members) established and being operated – Grocery, Sewing-Cutting, Piggery, Goat Rearing. Similarly 4 farmers group of Saurpani, Kharibot and Ghyakchowk were supported beehives along with bee to restart their apiculture. 4 female of Harmi and Jaubari were provided beautician training. 24 women of Barpak were provided sweater knitting training and were also provided machine support to run their own enterprise. 25 men of Barpak were provided blacksmith training and supported machinery support to run their own enterprise. Poultry farming training were provided to 50. People of Gorkha Municipality 4 and 6 handicraft training were provided to 27 people of Harmi VDC. Mobile repairing training was also provided to two youth

of Jaubari and Gorkha Municipality. In the same way driving training was provided to 12 youth of Gorkha Municipality, Harmi and Jaubari to sustain their livelihood. Bio-brick production training was provided to 28 people of Thulorip. They were also provided raw materials support to run their own bio brick production center. Two home stay were established in Barpak and Paslang to help community people to run their own enterprises and to sustain their own livelihood.

प्रो. सम्पक प्रेरीज श्रेष्ठ 9856040328 064-420328

जय गुरुदेव ड्रिड फूड एण्ड सप्तायर्स

गो. ज. पा-३

कालाश, गुरुदेव ड्रिड फूड, गुरुदेव ड्रिड फूड, OPC, PPC, PAC, TMT उड्डम अन्तराष्ट्रिय गुणवत्ताको छिन्ट ट्याग इन्सान, बेरकोट तथा विन्लेटोड इन्सामेन, डिस्टेन्सका उच्चस्तरीय डेक्कीङ मिक्चर इन्सामेन, घर छहर विन्लेटोड उच्चस्तरीय गुणवत्ता मुन्नेमा उपलब्ध गराईन्छ।

Health and Nutrition:

Health and Nutrition program focuses on increasing mothers', newborns', children's and adolescent's access to



health care services. We work closely with the Government's line agencies to ensure that every people can beat preventable and treatable illnesses and they get nutrition to survive and grow. In context of emergency various health institutions like health post were damaged which hamper the people's basic right to health. IN support of international and national partners SSICDC have made significant achievement in the sector of health and nutrition.

- Supported to Severe Acute Malnutrition Management in 11 Outpatient Therapeutic Care (OTC) Centers
- Supported to Moderate Acute Malnutrition Management in 24 Targeted Supplementary Feeding (TSF) Centers
- Promotion of optimal Infant and Young Child Feeding-Emergency (IYCF-E) practices.
- The construction of 3 health posts in Gankhu, Uhiya and Harmhi is completed. The health facilities are built



Pre fabricated Health Post of Uhiya Constructed by SSICDC

under government's standard guidelines adopting pre-fab model earthquake resilient semi-permanent design with fences for safety and protection.

- Solar and Geyser is installed for light and hot water facilities whereas fire extinguisher is added to deal with fire emergencies.
- Birthing center at Gankhu health post has started functioning after getting an approval from DPHO. In case of Harmhi and Uhiya they are in the process to get approval.
- Along with the construction of health facilities CARE has also constructed 3 PHC-ORC buildings, 2 in Barpak and one in Simjung. Basic equipment and essential furniture required at all the birthing centers are supported by CARE Nepal
- Developed a health contingency plan in 8 program VDCs and developed a district profile.



- 152 participants had aware on school health program
- 662 primary level students got benefit through health camp.

- 30 staffs of six HF (including partner staff) trained on infection prevention
- ORT rehydration therapy corners (ORT Corners) are established in all the Health facilities.



Sunita Ghale after safe delivery in Apollo hospital with her child

- ORT corners aims to ensure that children under 5 and other patients are not severely exposed to dehydration and contribute to reducing diarrhea related morbidity and mortality
- Separate toilets for men and women are established in all the three health post.



- CARE Nepal have also rehabilitated /constructed separate bathing facilities with lighting in 3 HFs and 3 in strategic market places or adjacent communities in coordination with ADH Project.

"You save my daughter and me. I am so happy that I cannot express my happiness. I cannot control my tears of happiness, Thank you, SSICDC and CARE Nepal, for your support."

Changing Trend-Laxman Gurung is a popular and experienced traditional healer of Sulikot -2, Gorkha. He was trained on traditional healing by his grandfather. After the epidemic outbreak in Barpak he participated in training organized by SSICDC on Medical treatment. After the orientation and training he started referring patient to health post and hospital as per the condition of the patient. I have referred more than 15 woman and children to the hospital.



Laxman Gurung-Traditional healer of Barpak

Education:

Education is one of the Major themes of the SSICDC. SSICDC believes in making the education in the reach of every individual. SSICDC always advocates for the free and compulsory in reach of every individual and society in context of the emergency all the aspect of the society were destroyed and education institution were no exception to it. SSICDC made a deliberate effort to sustain and retain the education in reach of every individual. In 2016 and 2017 SSICDC have made a significant achievement in sector of education. Some of the significant achievements are:

- Class room management has created effective learning environment in 51 schools.
- DRR & School Health-Nutrition related activities incorporated in School Improvement Plans of 51 schools and implemented effectively.
- 19 Child club members initiated wall magazine publication
- 14 out of children enrolled in school.



- 89 TLCs furnished and winterized.
- 64 Classrooms of 7 Schools are under construction
- Teachers were provided different trainings, who are delivering quality education and learning environment –
- Early Child Development (ECD) Training to 44 Teachers
-

Early Learning Math (ELM) Training to 51 Teachers

- Active Teaching Learning (ATL) Training to 48 Teachers
- School Health & Nutrition Training to 51 Teachers
- School Disaster Risk Reduction (DRR) Training to 51 Teachers
- 51 schools had developed DRR plan and DRR based school mapping through the Vulnerability Capacity Assessment (VCA).
- 2865 primary level children benefited through the health screening service.
- 850 children had got the stationery support.



Children Displaying Wall Magazine

- 21 out of 51 schools have met minimum standard of Quality Learning Environment (QLE baseline & End line survey)

Protection (GBV, Safe Justice)



SSICDC have also given importance to the strengthening of community based protection mechanism to ensure the protection of women and children. Taking the crucial scenario of abuse neglect and discrimination in the society SSICDC believes in equal opportunity and equal access to service and justice to all groups of people of the community. Some of the major achievements in the theme are

- Identified 54 poverty pocket area, 162 REFLECT groups formed and class conducting smoothly as well as 108 CJRP, 113 REFLECT Management Committee Formed through underline courses of Poverty vulnerable Assessment (UCAPVA Tools) and Participatory Well Being Ranking (PWBR) Tools
- People have Started to Share their fillings emotion, sorrow and grief during the REFLECT

Session without any hesitation and express this is the real place for sharing own bitter experience.

- REFLECT participants Decided to repair and improve Foot trail which was not repair since many years.
- Started to claim and receive target budget from the ward office which was not known properly its process
- Ownership from the elected body and active participation during the initial phase of Project activities to till date.
- Identify genuine issues related to traditional social norms through REFLECT Class



Access mapping at Palungtar MP-2, Chapabhanjyang

विष्णु राजा नगर
अर्घाखाँडा

नेपाल आदिवासी जनजाति महासंघ
Nepal Federation of Indigenous Nationalities (NEFIN)

जिल्ला समन्वय परिषद्, गोरखा

फोन : ०६४-४२०७६२, मोबाइल : ९८४६०२४६२९, ९८०२०२४६२९
इमेल: nefin_gorkha@yahoo.com, magarbishnurana@gmail.com

राना फर्निचर स्टोर्स
गोरखा ब.पा.-३, शक्तिचोक, गोरखा फोन : ०६४-४२०४७०

अफिस तथा घरवासी प्रयोजनका आकर्षक, सम्पूर्ण फर्निचर एवं फर्निचरको शोरुम

- Conduct jointly cultural public event in collaborative way with the lead by Women REFELCT Group of Chhoprak that created trust build of Project for Community level.

Referral mechanism:



Women in Nepal have limited mobility and access to resources due to patriarchal nature of Nepalese society. Consequently, women are not only exposed to GBV but are also unaware of referral services available in the community. It remains essential that the community people are well aware about the referral system available in their community. SSICDC provided information to GBV survivors, especially vulnerable women and adolescent girls about the existing referral services. 8 people were financially supported and many more were provided with technical suggestions for referral. Among the 8 cases that have received the support, 2 referral cases received citizenship card from Barpak, 3 cases got disability card from Harmi and 3 cases of pregnant women from Barpak VDC referred to District Hospital for getting emergency obstetric service. Altogether 17 cases being referred to different agencies. Similarly

6 community mobilizers were trained on GBV protection and awareness measures. SSICDC disseminated messages on GBV issues such as, legal implications of early marriage as stated in the newly promulgated constitution, referral services available, legal implications of polygamy, issues of rape and domestic violence, among others, and ways to mitigate them. These programs reached 2768 beneficiaries (1005 males and 1763 females). To aware & sensitize the community people on GBV volunteer were mobilized at community level. Volunteer were trained on psychosocial first aid, referral & case management. Through this they disseminate the message on referral mechanism and GBV in community. 184 community people receive psychosocial service. SSICDC also organized 8 episode of Community Theater for rising awareness on GBV issues.

“Gam Maya is a woman of Sulikot 2, who lost her husband and house during devastating Earthquake of 2015. As a single woman she faced a lot of social discrimination and stigma.



Gam Maya with Her child

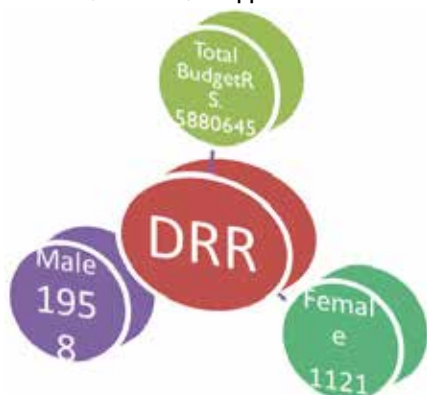
Due to poor economic conditions she was even more vulnerable to many issues. She was not even able to get the citizenship which obstructed her to enjoy the services provided by government to single woman. SSICDC facilitated the process which helped her to gain her citizenship and also the birth certificate to her child. Now she is able to receive the single woman allowance through government."

Disaster Risk Reduction:

DRR is a systematic approach to identifying, assessing and reducing the risks of disaster. It aims to reduce socio-economic vulnerabilities to disaster as well as dealing with the environmental and other hazards that trigger them. Nepal and Gorkha in Special is a hotspot for geophysical and climatic hazards. The district is relatively ranked very high in terms of vulnerability to natural calamities. The risk is believed to be increasing very rapidly mainly due to the growth in population. Another major factor for the increasing risk is the lack of a favorable policy and legal environment commensurate with the present-day situation, needs, opportunities and

resource. In context of emergency, SSICDC in Collaboration with its partners have initiated to institutionalize DRR in community level through LDMC Formation and its endorsement through VDC Assembly. Some of the major Achievements in the year are:

- Emergency Fund @ Rs. 50,000.00 established in Swanra & Taku and VDCs also allocated budget @ Rs. 50,000.00
- Local Disaster Risk Management Plans (LDRMP) formulated and endorsed (Swara, Taku, PKD, Pandrung, Masel)
- District Disaster Rescue Team (DDRT) Formed and trained
- Simulations in Swanra, Takukot & Gorkha district accomplished
- Trainings and awareness activities accomplished
- CBDRR Training to FCHVs in 2 VDCs
- LDMC Formation – Swanra, Takukot
- DRR Orientation – VDCs & Sectoral Line Agencies
- Gabion retaining wall & partial fencing – Khepdanda Land slide protection, Swanra and Suryajyoti School, Takukot



Simulations In Gorkha Municipality

- Road extension and land slide protection – Takukot Health Pos

Partnership with Government

Along with the partnership with International agency SSICDC have also worked closely with the government agency especially with District Development Committee Gorkha. SSICDC have implemented three project Improved Cooking Stoves, LGCDP and PAF. The Government partnership have resulted in following achievement

- 90 ward Citizen forum enrolling 2147 members was formed and mobilized
- 90 % of the plan generated by marginalized group of the community were incorporated in community development programs
- Home stay was established.
- Animal Husbandry was encouraged
- Group apple farming was established in Chumchet for the livelihood of community people.
- Yak farm field was improved in Chekampar to enhance Yak rearing.

2 VDC barpak and Deurali IAP Free

Government Partnership

One home stay, Apple farming, Ginger farming

- Ginger farming was supported in Arughat-7
- Agro processing mill was established in Bhimshen Gaupalika -3 to enhance livelihood of the community people.
- Raised knowledge on election education to community people.



हामी यहाँ खेतीबारी जोतने हाते टयाक्टर, काठ चिरन मेशिन धान कुटने मकै कोदो पिसनी, हसवर पोलिस्कर, मिक्चर सेट, तोरी पेल्ले मेशिन पाईन्छ।

Human Resource

S.N	Designation	Nos. of Staff
1	Executive Director	1
2	Program manager	3
3	Program Coordinator/ Project Coordinator (WASH/Livelihood)	9
4	ADMIN/ Finance Coordinator/ Finance Officer	6
5	Finance Assistant	2
6	Shelter Co-ordinators/Engineers	4
7	Logistic and Procurement Officers	1
8	Oversees	9
9	Sub-overseer	10
10	HR Officer	1
11	Program Officer	3
12	Health Officer/Hygiene Promotion Officer	2
13	Field Supervisor	2
14	Social Mobilizer	51
15	Meal Officer	3
16	Documentation Officer	1
17	Senior Technician	1
18	Junior Technician Assistant	17
19	Social Animator	13
20	Support Staff/office Assistant	4
21	Driver	1
22	Door to Door staff/ Skilled Mason	6
23	Marketing Officer	1
24	Artisan Facilitator	4
25	Community Mobilization Officer (CMO)	1
26	Shelter technician Officer	2
27	Casual staff	2
28	RH Assistance	2
29	Field officer	2
	Total	164

Audit Report

Shree Swanra Integrated Community Development Center (SSICDC)

Gorkha Municipality-3, Haramtari, Gorkha

Income and Expenditure Statement

Particulars	Sch	This Year Amount (Rs.)	Last Year Amount (Rs.)
Income			
Income from Donor	6	514,026,397.44	201,209,262.15
Total A		514,026,397.44	201,209,262.15
Expenses			
Save the Children	7	232,343,289.81	65,495,027.97
CRS	8	113,662,313.20	6,082,382.60
Care Nepal (All Program)	9	89,824,607.10	31,814,201.24
Care Hariyo Bann	10	19,652,135.11	29,209,559.55
WWF / Hariyo Bann	11	8,121,225.27	27,312,605.26
LWR	12	34,842,312.12	11,396,632.85
PAF	13	1,657,669.97	1,115,153.00
DDC / ICS	14	-	610,300.00
WOO	15	-	2,859,640.00
LGCDP	16	275,588.00	300,000.00
WOREC Nepal/ UNFPA	17	-	2,723,637.54
UNDP / LSER	18	12,432,881.00	1,742,404.00
UNDP / CILRP	19	7,557,748.00	-
RIA/ INSAC	20	2,043,459.00	-
UNICEF / WASH	21	1,077,270.00	-
Other Expenses	22	-	226,000.00
Total B		523,490,496.58	180,887,544.01
Surplus (A-B)		(9,464,099.14)	20,321,718.14
Excess of Income over Expenses)		-	-
Surplus/Reserves Available for Appropriation		(9,464,099.14)	20,321,718.14
Appropriation		-	-
Less: Fines and penalties for late filling of Return		-	-
Surplus/Reserves Transferred to Balance Sheet		(9,464,099.14)	20,321,718.14
Notes to Accounts	23		

Finance/Admin
Co-ordinator

Executive Director

As per our Report of even date

Chartered Accountant



Assets:

Sr.No	ITEM DESCRIPTION	QTY	Sr.No	ITEM DESCRIPTION	QTY
1	Laptop Computer	56	19	Office T-Tab	6
2	Office Chair	50	20	Desktop Computer	4
3	Plastic Chair	33	21	External Hard Disk	4
4	Meeting Chair	32	22	Projector	4
5	Cupboard	28	23	Avini Level	3
6	Mobile Phone	25	24	Scanner	2
7	Wodden Table	23	25	Computer Table	1
8	Steel Open Rack	23	26	Generator	1
9	Office Table	18	27	GPS	1
10	Camera	17	28	Invertor	1
11	Celling Fan	16	29	Projector Screen	1
12	Printer	15	30	Scorpio Pick Up	1
13	Meeting Table	11	31	Scooter	1
14	Wodden File Rack	10	32	Sofa set	1
15	Power Bank	10	33	Stand-Fan	1
16	Motorbike	9	34	Steel Glass Rack	1
17	Steel Table	8	35	Water Dispenser	1
18	Visitor Chair	6			

Photo Gallery: (Please attach the photos from the galleries files)



Inaguration of Drinking Water Supply Project at Bahakot, Takukot by DCC Chair.



Hr. Deputy Prime Minister and minister of Education awarding the Certificate of Honor to SSICDC Gorkha.



Transportation of Foods, arranged by SSICDC in Northern Remote areas of Gorkha using Nepal Army's Helicopter.



Bio-Engineering at Gorkha Municipality for Disaster Risk reduction



ICS volunteer volunteered for Livelihood and WASH activities at Namjung, Gorkha through Raleigh International's program of SSICDC.



Chief Minister of Province-4 awarding certificate of appreciation to SSICDC



RVT of Barpak Drinking Water Supply Project completed by SSICDC in partnership with CARE Nepal under NERP.



Health Post building handover to HFOMC at Siranchok-3, Harmi by joint team of CARE and SSICDC



PHC-ORC building at Masel constructed by joint team of SCI and SSICDC



Under construction Thalibari Basic School at Pandrung Gorkha, being constructed by SCI and SSICDC



CARE team monitoring visit of SSICDC field at Barpak, Gorkha



LWR team monitoring visit of SSICDC field at Jaubari, Gorkha



Monitoring Visit of UNDP team



LWR HQ representative's monitoring visit of Livelihood activities at Phinamtaar, Jaubari.



Taiwan ICDF representative's monitoring visit of Livelihood activities at Chhoprak, Gorkha.



CAFOD monitoring visit at Arughat-6, April



Denmark Prince Visit at SSICDC working areas



Health Post Building Constructed at Pandrung



Program on Improved Cooking Stoves



Irrigation Canal Constructed by SSICDC at Saurpani



District Joint monitoring team at Aruarbang



Social Welfare Council Visit



USAID Mission Visit



Demo House constructed at Aruarbang



SSICDC Board members and Staffs during Semi Annual Review Meeting

Our Partners





Shree Swanra Integrated Community Development Center (SSICDC)

Gorkha Municipality, Gorkha

Telephone No: 064-421377

Email: gorkhassicdc@gmail.com

Website: www.ssicdc.org.np